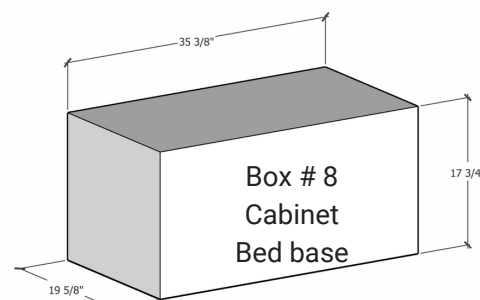
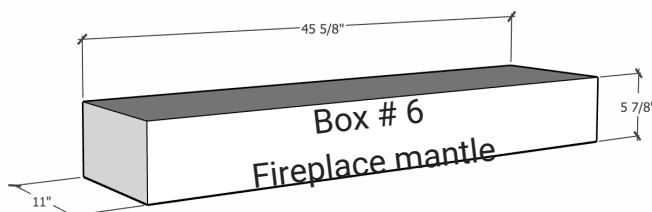
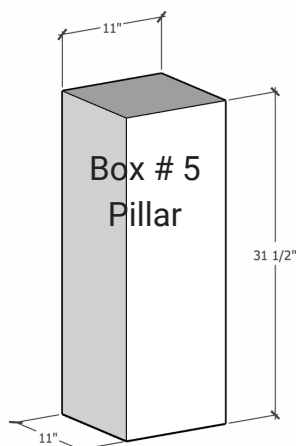
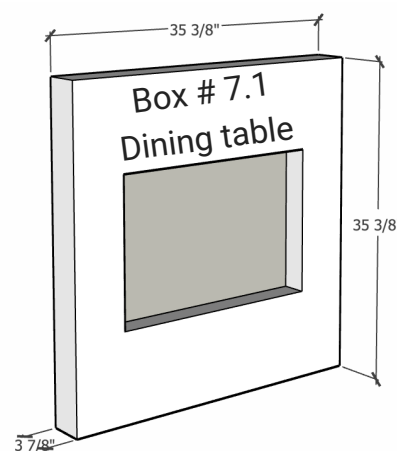
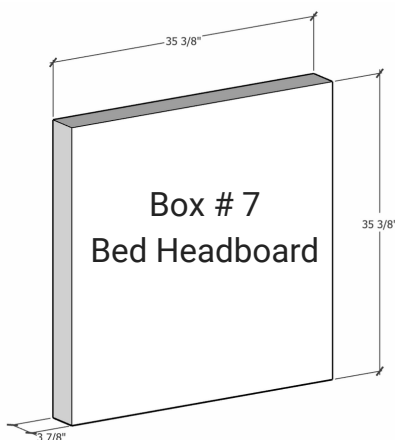
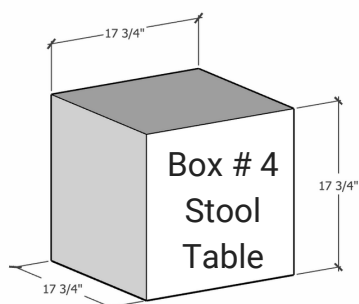
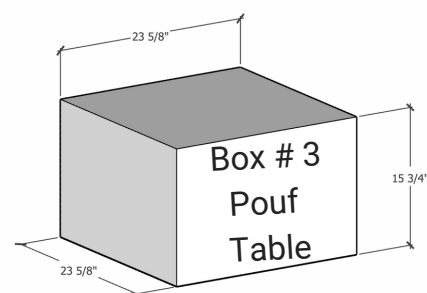
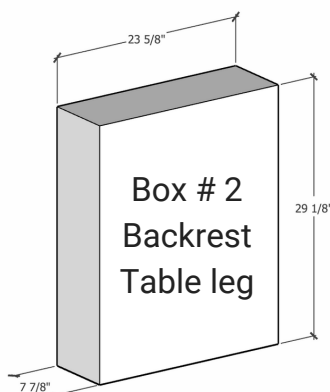
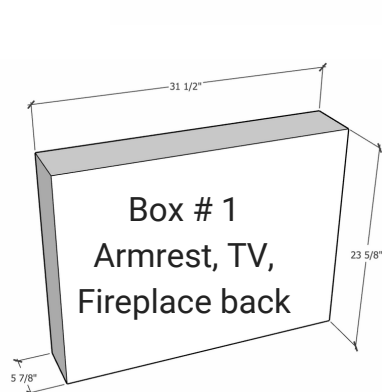
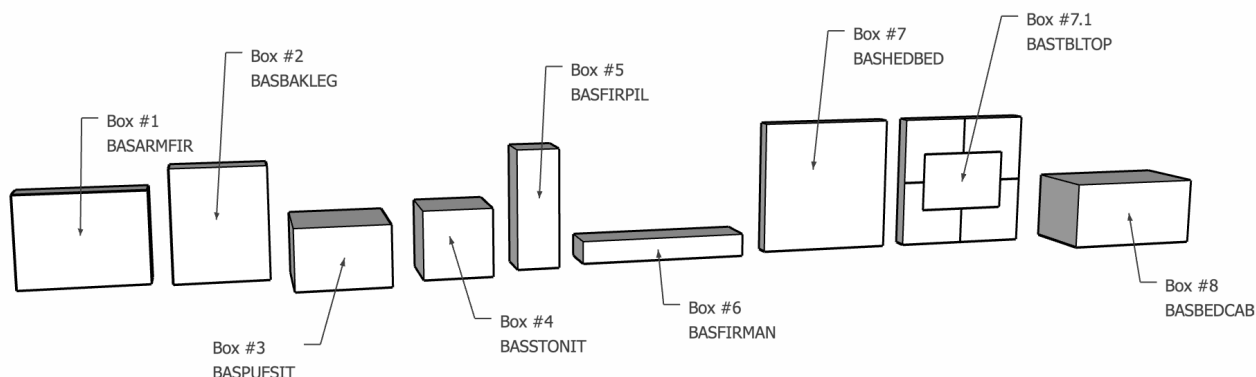


WARNING: the CUBIQZ furniture is **NOT** for real use and it is not a toy.
To avoid accidents, once assembled place a **DO NOT SIT** sign on each module.



Tools Needed: a Stanley knife/cutter, Transparent tape

Getting to know the boxes:



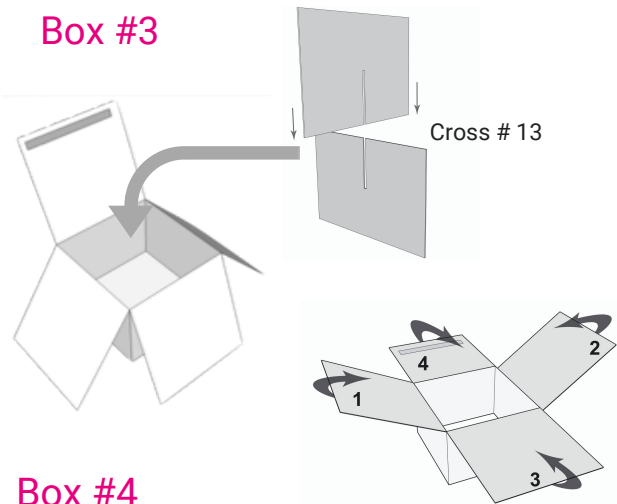
Boxes #3, #4, #5, #7, #7.1 are delivered with a double side tape strip on each flap. If you wish to re-use the box, we suggest using instead small regular transparent tape strips to close it, open it, flatten it and stock it.

Box #	Article Ref.	Description / use	Dimensions L x W x H <i>cms</i>	Dimensions L x W x H <i>inches</i>	Reinforcement & Closure
Box # 1	BASARMFIR	Seating armrest, TV set, fireplace back	60 x 15 x 80	23 5/8 x 5 7/8 x 32 1/2	No reinforcement cross Close with tape strips
Box # 2	BASBAKLEG	Seating backrest, dining table leg	60 x 20 x 74	23 5/8 x 7 7/8 x 29 1/8	No reinforcement cross Close with tape strips
Box # 3	BASPUFSIT	Seat, pouf, coffee table	60 x 60 x 40	23 5/8 x 23 5/8 x 15 3/4	Use with reinforcement cross # 13 Close with tape Strips
Box # 4	BASSTONIT	Stool, nighstand	45 x 45 x 45	17 3/4 x 17 3/4 x 17 3/4	Use with reinforcement cross # 14 Close with tape Strips
Box # 5	BASFIRPIL	Decorative column, fireplace pillar	28 x 28 x 80	11 x 11 x 31 1/2	Use with reinforcement cross # 15 Close with tape Strips
Box # 6	BASFIRMAN	Fireplace mantle	28 x 15 x 116	11 x 5 7/8 x 45 5/8	No reinforcement cross Close with tape strips
Box # 7	BASBEDHED	Bed headboard	90 x 10 x 90	35 3/8 x 3 7/8 x 35 3/8	No reinforcement cross Close with tape strips
Box # 7.1	BASTBLTOP	Dining table top	90 x 10 x 90	35 3/8 x 3 7/8 x 35 3/8	Use with reinforcement cross # 17.1 Close with tape Strips
Box # 8	BASBEDCAB	Bed base, cabinet	50 x 45 x 90	19 3/4 x 17 3/4 x 35 3/8	Use with reinforcement cross # 14 Close with tape Strips
Plate # 13	CRSPUFSIT	Inside cross reinforcement for seat, pouf, coffee table	size per plate: 83 x 40	size per plate: 32 5/8 x 15 3/4	Use two plates per reinforcement cross
Plate # 14	CRSSTOCAB	Inside cross reinforcement for stool, bed base, cabinet	size per plate: 45 x 63	size per plate: 17 3/4 x 24 3/4	Use two plates per reinforcement cross
Plate # 15	CRSFIRPIL	Inside cross reinforcement for fireplace, decor pillars	size per plate: 81 x 39	size per plate: 31 7/8 x 15 3/8	Use two plates per reinforcement cross
Plate # 17.1	CRSTBLTOP	Inside cross reinforcement for dining table top	size per plate: 83 x 83	size per plate: 32 5/8 x 32 5/8	Use one plate per box
Printed Panel # 26	PANCABWIT	Panel for cabinet white	90 x 95	35 3/8 x 37 3/8	Stick on to Box # 8 with double sided tape
Printed Panel # 27	PANCABOAK	Panel for cabinet oak	90 x 95	35 3/8 x 37 3/8	Stick on to Box # 8 with double sided tape
Printed Panel # 28	PANTVE001	Panel for TV set	80 x 60	31 1/2 x 23 5/8	Stick on to Box # 1 with double sided tape
Printed Panel # 29	PANFIR001	Panel for fireplace	60 x 80	23 5/8 x 31 1/2	Stick on to Box # 1 with double sided tape

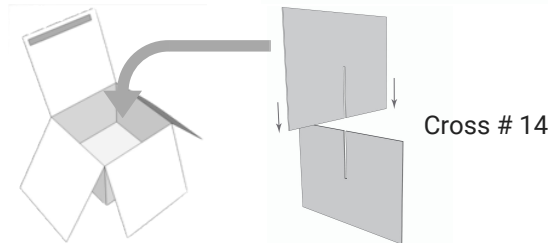
Boxes with reinforcement crosses

Check chart to confirm boxes that require assembly with reinforcement crosses

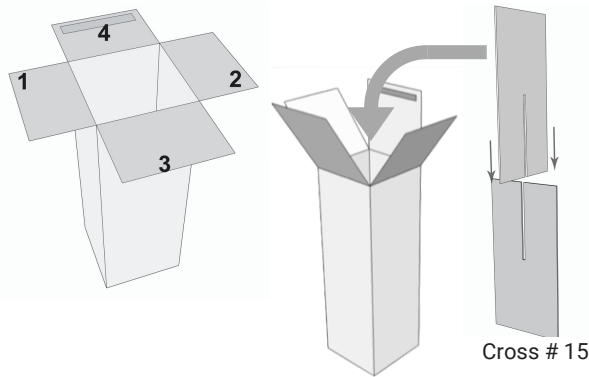
Box #3



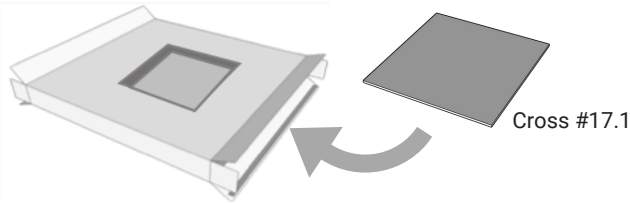
Box #4



Box #5

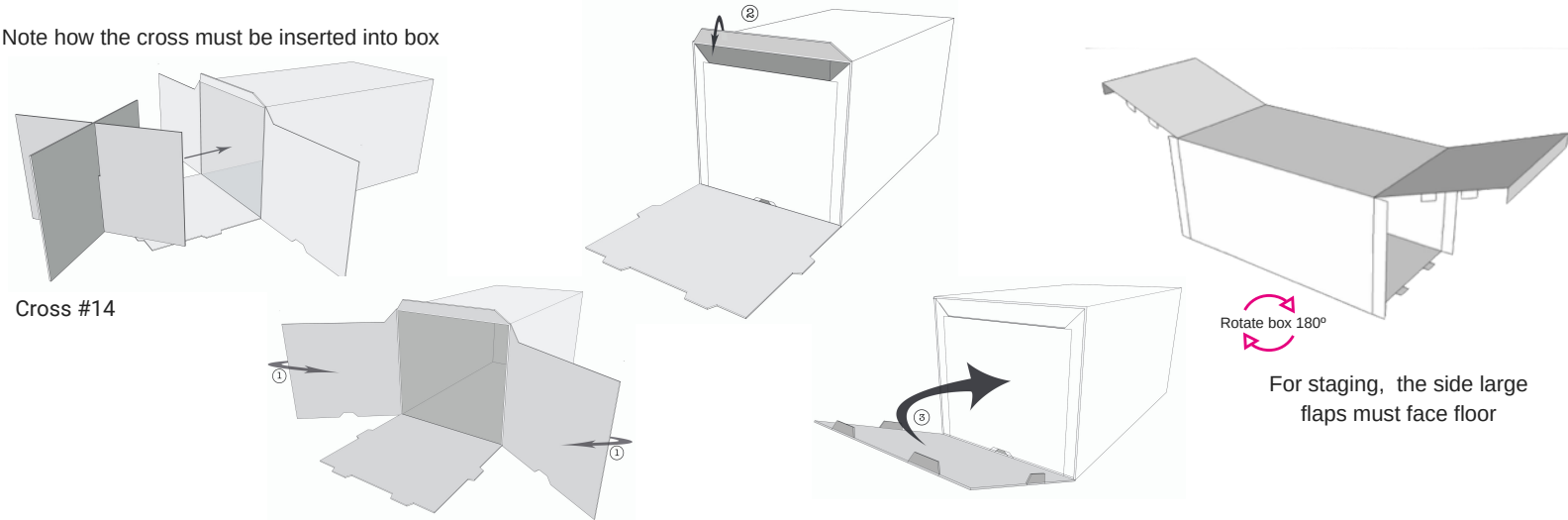


Box #7.1



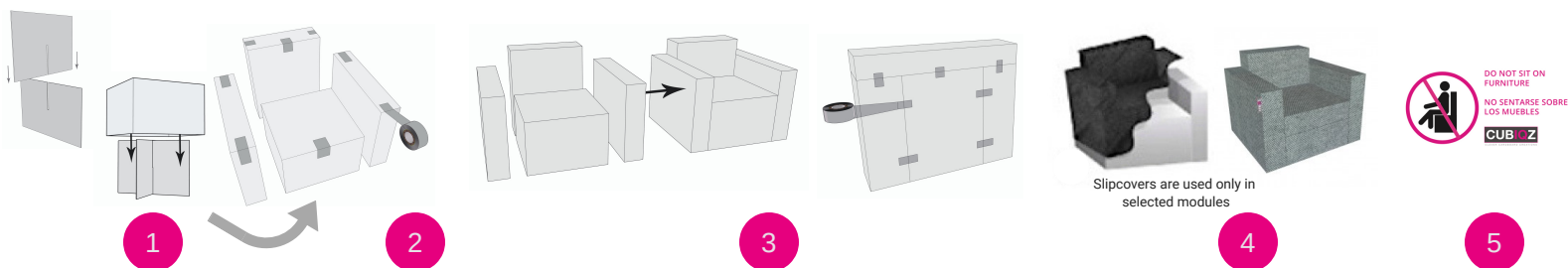
Box #8

Note how the cross must be inserted into box



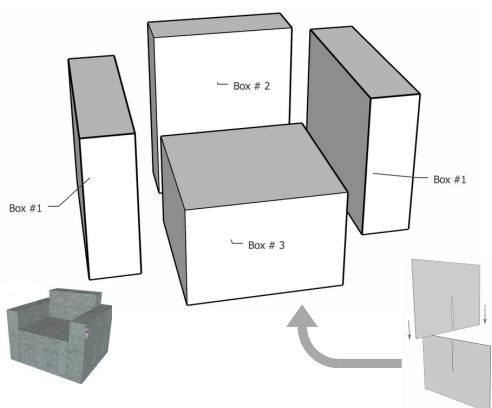
WARNING: the CUBIQZ furniture is **NOT** for real use and it is not a toy.
To avoid accidents, once assembled place a **DO NOT SIT** sign on each module.

Arming seating modules



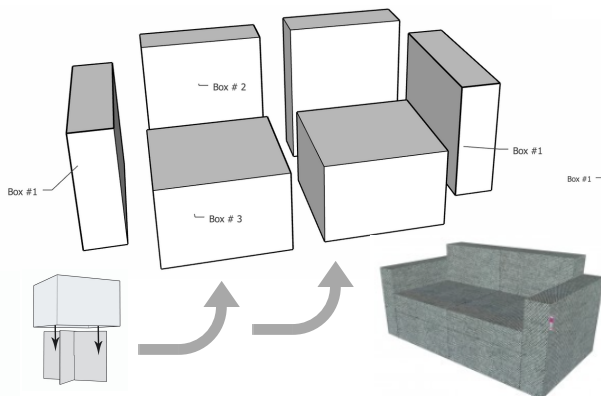
1. Arm each box separately as per instructions. On selected models, remember to insert the reinforcement cross inside.
2. Boxes may be closed using short stripes of transparent tape.
3. Group boxes together following module assembly specifications below. You may use stripes of tape to join them together.
4. If the module requires a slipcover, carefully fit it over the boxes once grouped together.
5. Once assembled and fitted, place a **Do Not Sit** sign on **each** seating module and secure it with a strip of tape.

The Armchair



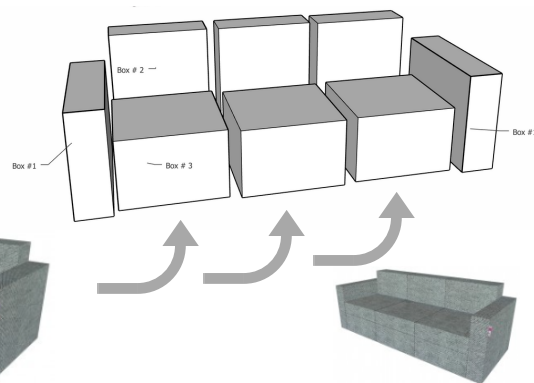
2 box #1 BASARMFIR
1 box #2 BASBAKLEG
1 box #3 BASPUFSIT
1 cross #13 CRSPUFSIT

The Two Seater



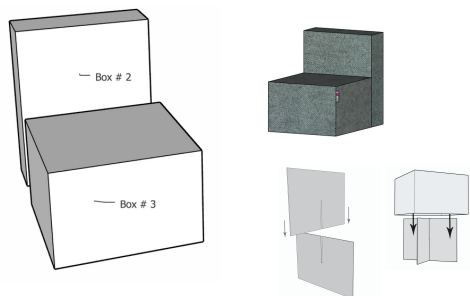
2 boxes #1 BASARMFIR
2 boxes #2 BASBAKLEG
2 boxes #3 BASPUFSIT
2 crosses #13 CRSPUFSIT

The Three Seater



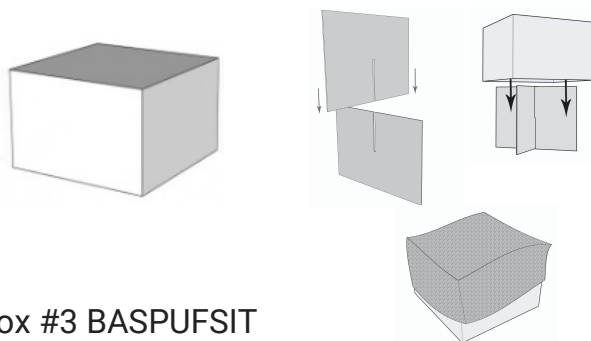
2 boxes #1 BASARMFIR
3 boxes #2 BASBAKLEG
3 boxes #3 BASPUFSIT
3 crosses #13 CRSPUFSIT

The Chair



1 box #2 BASBAKLEG
1 box #3 BASPUFSIT
1 cross #13 CRSPUFSIT

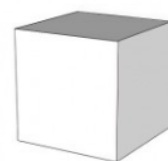
The Pouf / Coffee Table



1 box #3 BASPUFSIT
1 cross #13 CRSPUFSIT

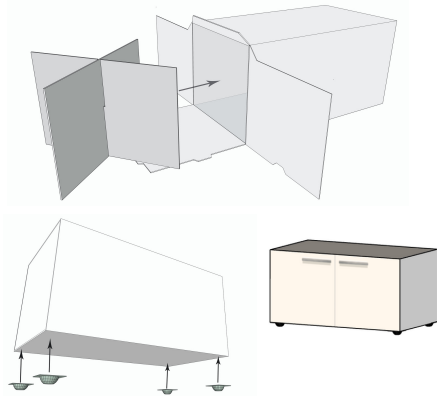
Slipcover: Optional

The Stool / Nightstand



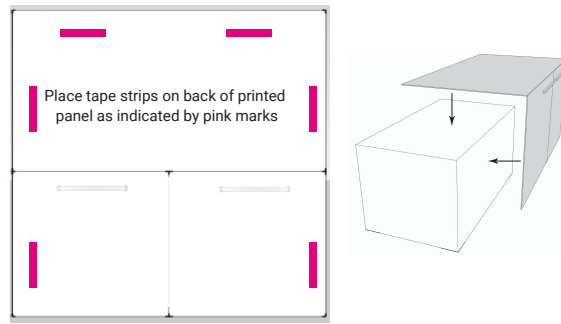
1 box #4 BASSTONIT
1 cross #14 CRSSTOCAB

The Cabinet



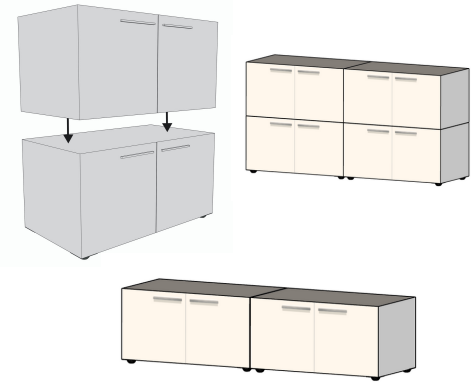
- 1 box #8 BASBEDCAB
- 1 cross #14 CRSSTOCAB
- 1 printed cabinet panel
- 6 double sided tape strips
- 4 plastic casters (floor unit only)

The Printed Panel



Attaching a printed panel to a box:
You have been provided with a set of 6 double sided tape strips to adhere the panel to the box. These strips must be placed on the panel and not on the box, following scheme. Positioning strips in this way will avoid damaging the panel or the other pieces once you disassemble the module and store it for new use. Be extra careful when removing the panel, use a flat knife or similar and avoid pulling up and bending the angles.

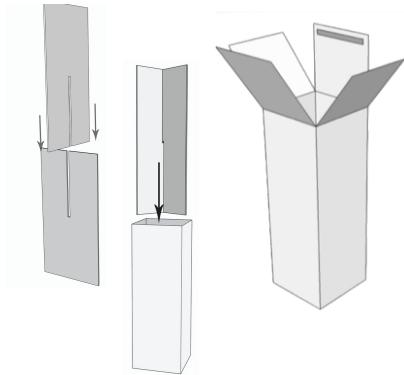
Multiple Cabinets



For safety and stability, attach boxes together using small pieces of regular transparent tape.

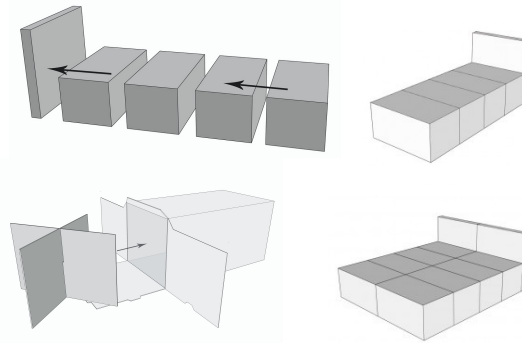
Do not stack more than 2 units vertically.

The Decor / Fireplace Pillar



- 1 box #5 BASFIRPIL
- 1 cross #15 CRSFIRPIL

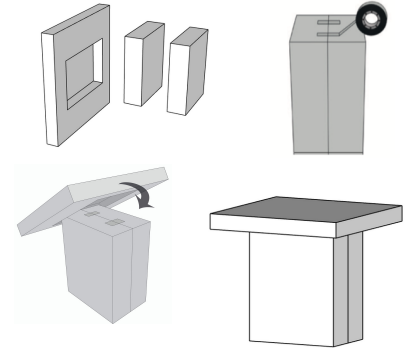
The Single / Double Bed



- 1 / 2 box #7 BASEHEDBED (optional)
- 4 / 8 box #8 BASBEDCAB
- 4 / 8 crosses #14 CRSSTOCAB

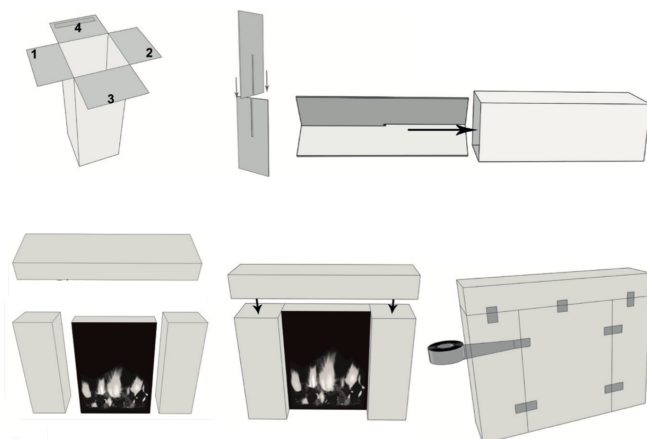
For safety and stability, attach boxes together using small pieces of regular transparent tape

The Table



- 1 box #7.1 BASTABTOP
- 2 boxes #2 BASBAKLEG
- 1 cross #17.1 CRSTBLTOP

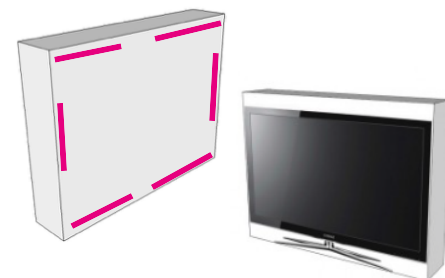
The Fireplace



- 1 box #6 BASFIRMAN
- 2 boxes #5 BASFIRPIL
- 2 crosses #15 CRSFIRPIL
- 1 printed panel fireplace
- 6 double sided tape strips for panel

For safety and stability, attach boxes together using small pieces of regular transparent tape as indicated in scheme

The TV Set



- 1 box #1 BASARMFIR
- 1 printed panel TV set
- 6 double sided tape strips